

The TRACK 1100 ships with a standard battery pack BAT 8203. Please order these battery packs and replace with these battery packs.

Some early versions of the tracker shipped with the battery pack BAT 8201.



Step 1

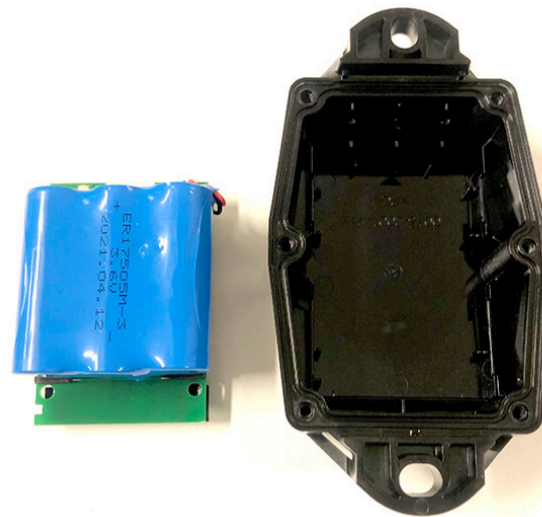
- Make sure that the serial number and logo are facing the right way up.
- Then turn the tracker face down.
- Unscrew the 6 screws.

Tip: If using a power drill, use power setting 7, on low. (Note: not all power drills have the same settings!)



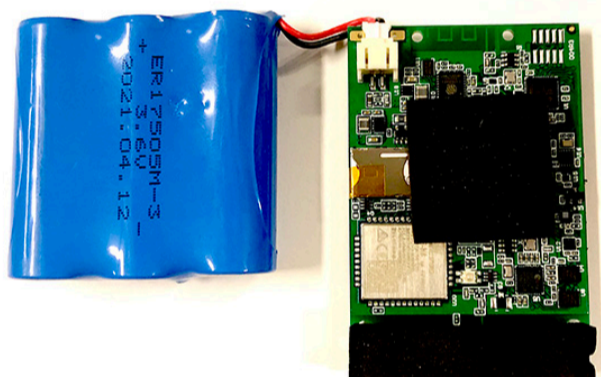
Step 2

- Remove the back plate and the 6 screws.



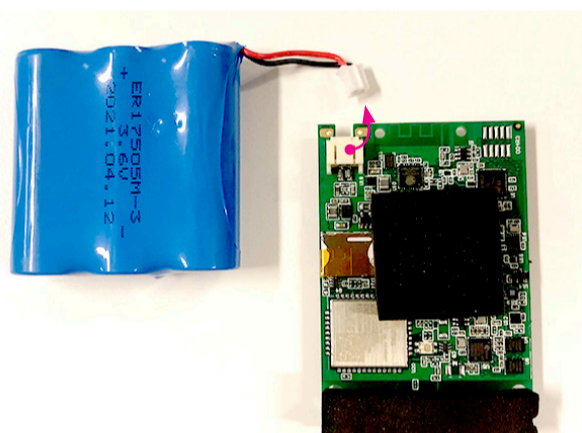
Step 3

- Remove the battery and pcb pack as a whole



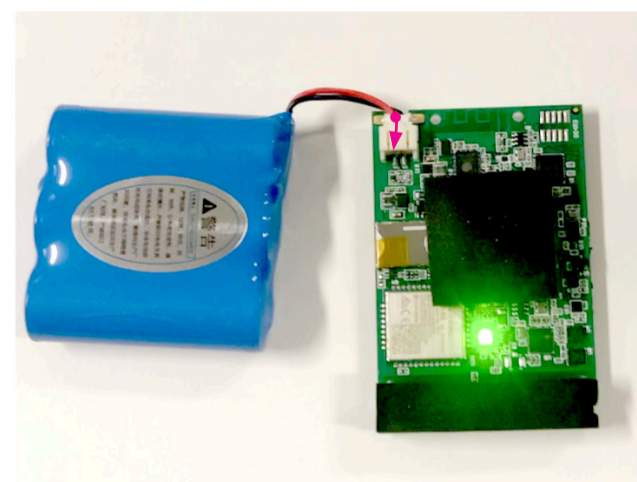
Step 4

Separate the battery pack from the PCB and line them up next to each other.



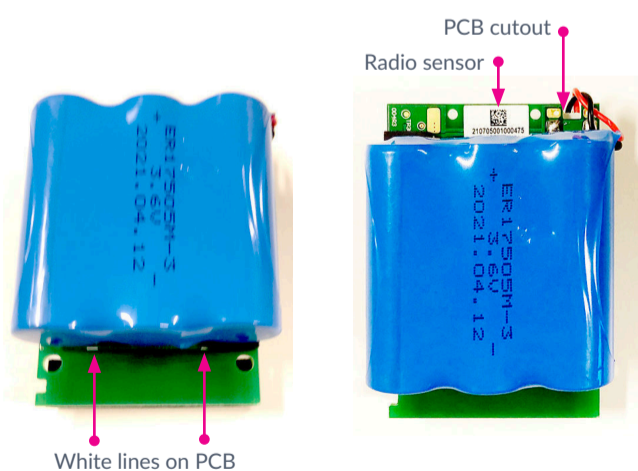
Step 5

Disconnect the battery pack from the PCB. Be careful in disconnecting the battery pack.



Step 6

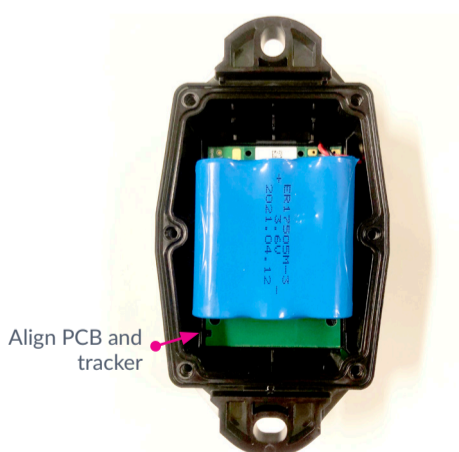
Connect the new battery pack to the PCB, a green led will blink for a few seconds.



Step 7

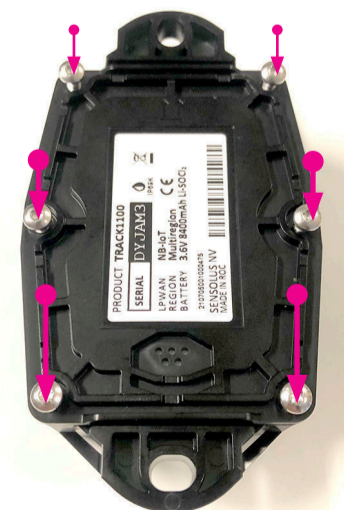
Align the battery on the back of the PCB. Turn the wires around the PCB, there is a cutout in the PCB to guide the wires.

The battery **cannot** cross the white lines on the PCB and **cannot** cover the radio sensor.



Step 8

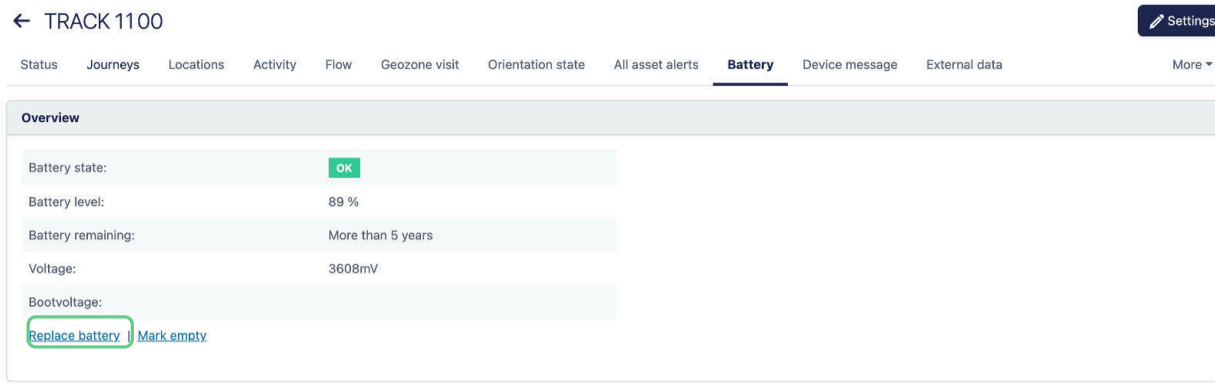
Place the battery and PCB pack back in the tracker. There is a little cutout in the PCB to align properly in the tracker.



Step 9

Close the tracker carefully. Your tracker is ready to use again.

Indicate battery replaced in platform



When you replaced the battery in the tracker you have to indicate that in the platform.

- Go to the tracker details page in the general section. You can search for this tracker or find it in the asset list or asset map.
- Click on the replace battery link to indicate you have replaced the battery of that tracker.
- Confirm the update.

